

figure 1

Figure 1. Location map with places mentioned in the text. The hatched area is the surface projection of the Channel Islands Thrust Fault.

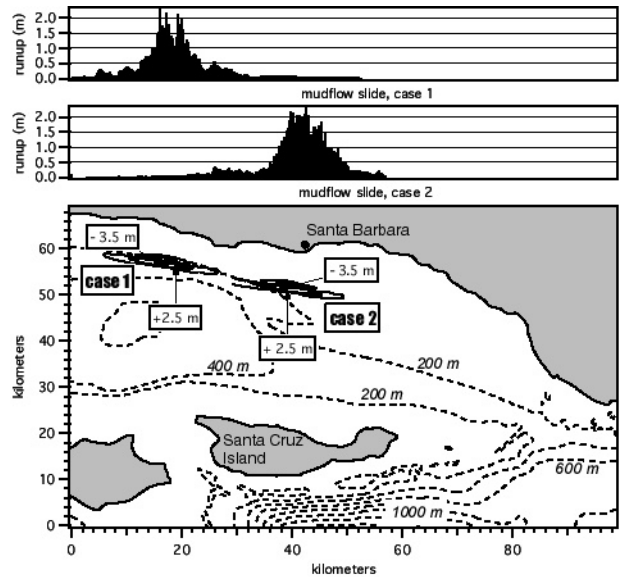


figure 2

Figure 2. Modeling the tsunami generated by the seismically induced Gaviota mudflow. Two different cases are shown with the initial condition placed in different locations off of the coast. Note how the runup pattern stays basically the same, and is shifted along the coast.

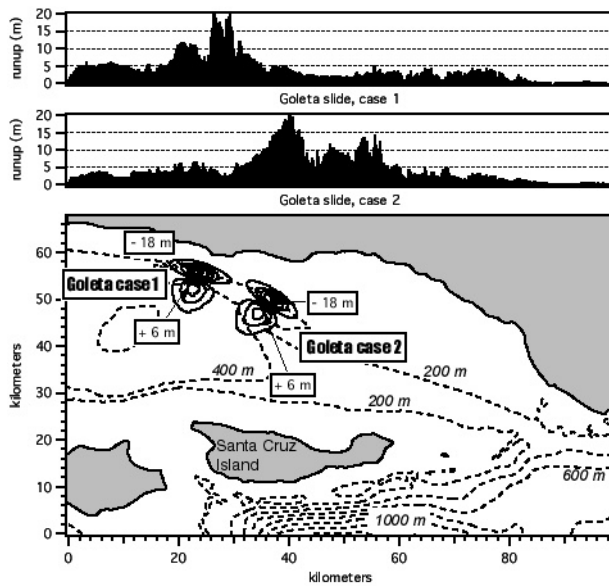


figure 3

Figure 3: Tsunami runup produced by the Goleta Slide, identified offshore of Goleta, California by Greene and Maher 2000. Again two location scenarios are shown.